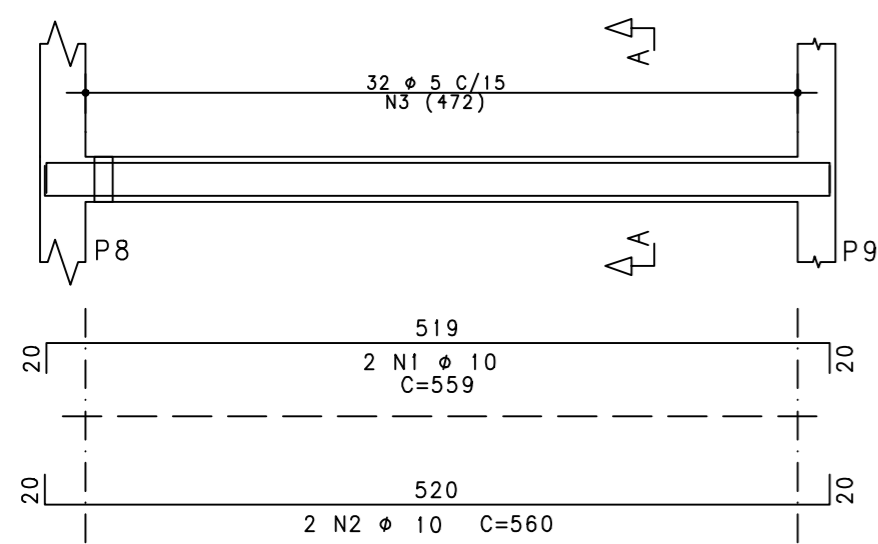
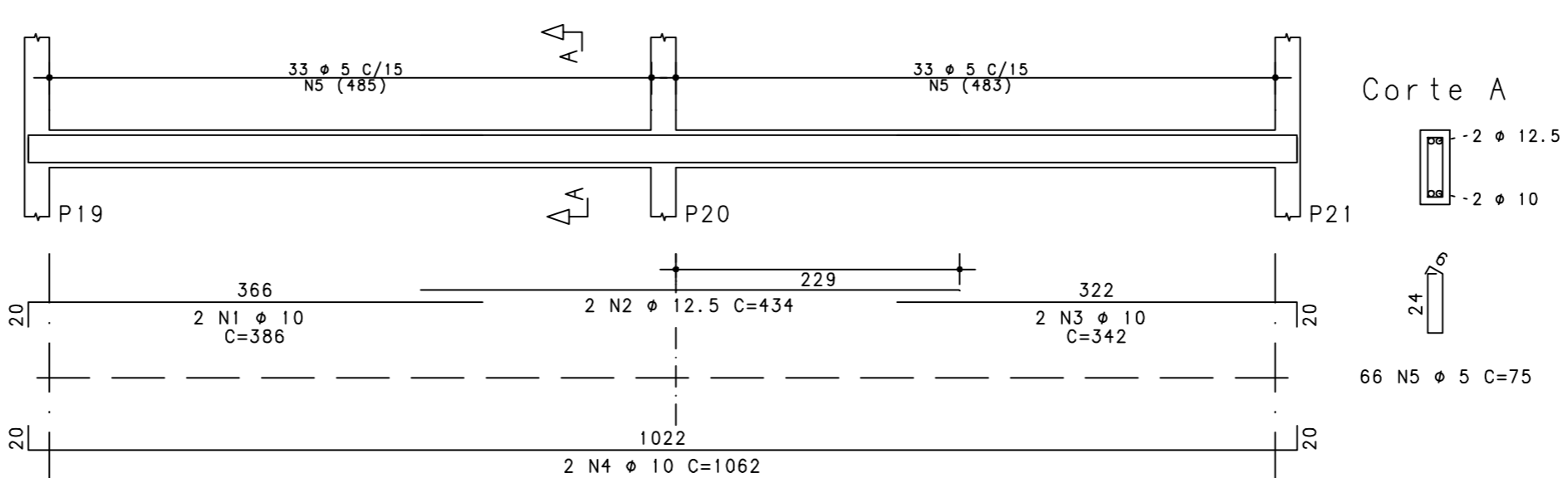


V 1 12/30



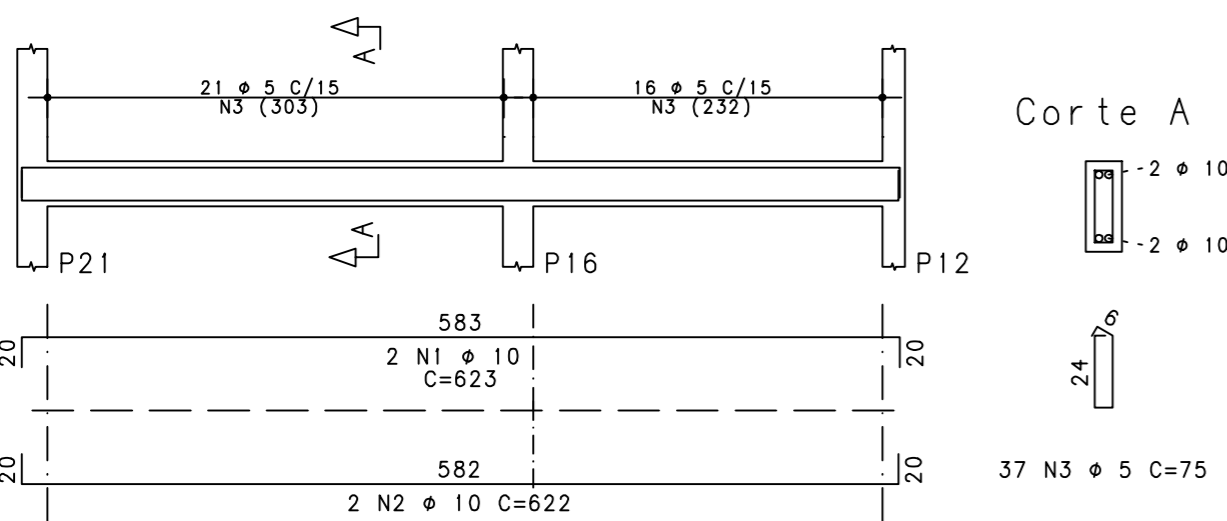
V 2 12/30



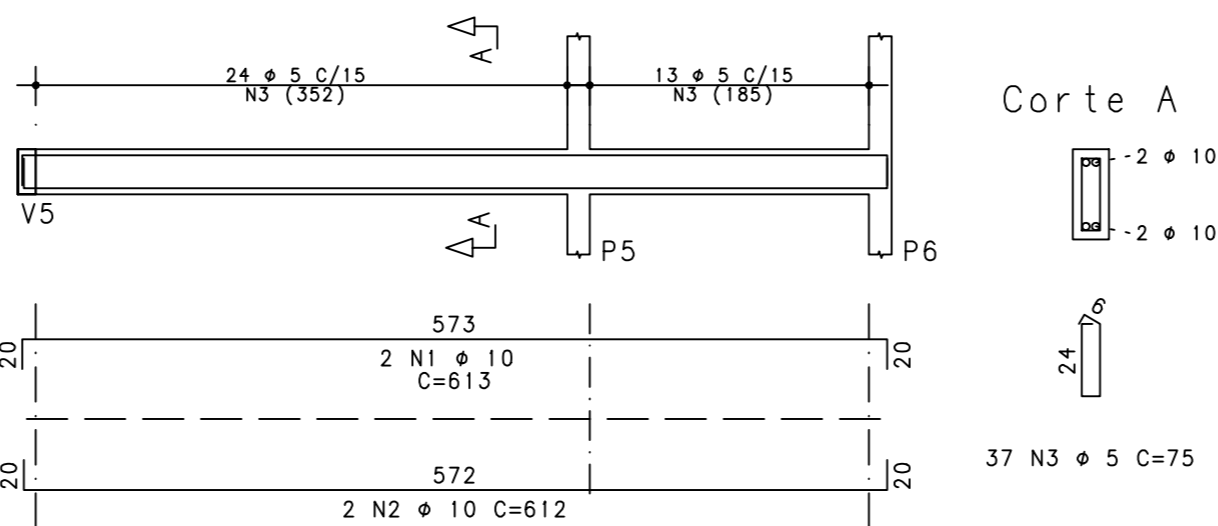
RESUMO DE AÇO

$\phi$	COMP. TOTAL (m)	PESO (kg)	
		UNITARIO	TOTAL
AÇO CA-60			
5	268	0.15	40
AÇO CA-50			
10	207	0.63	130
12.5	44	1.00	44
PESO TOTAL = 214 kg			

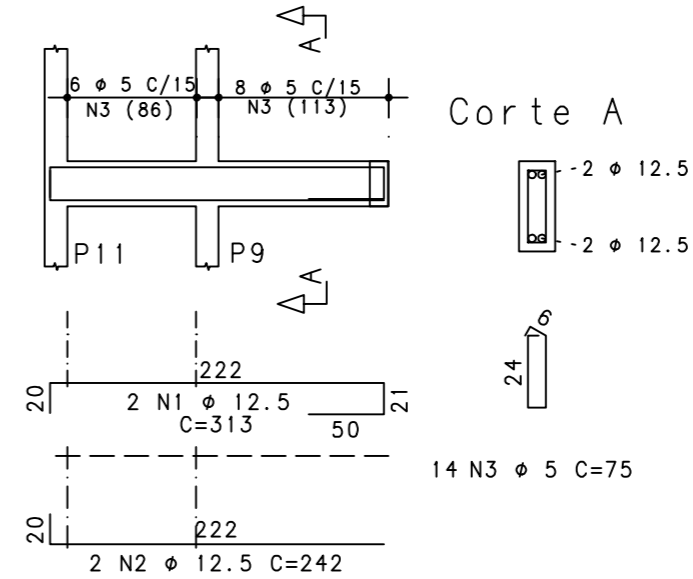
V 3 12/30



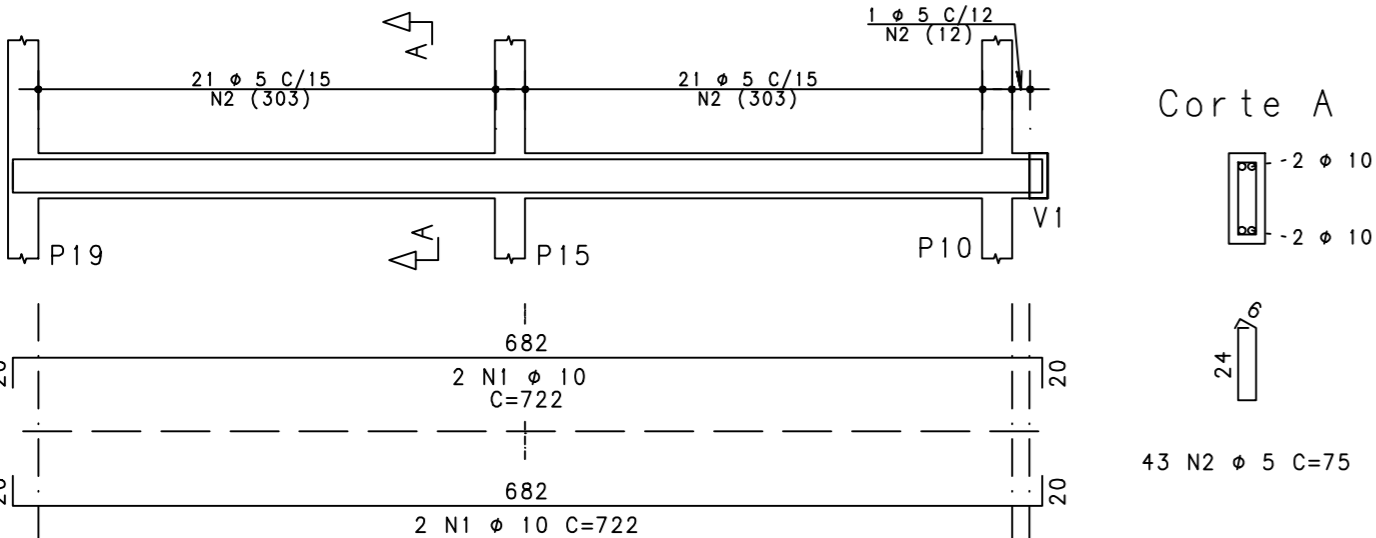
V 4 12/30



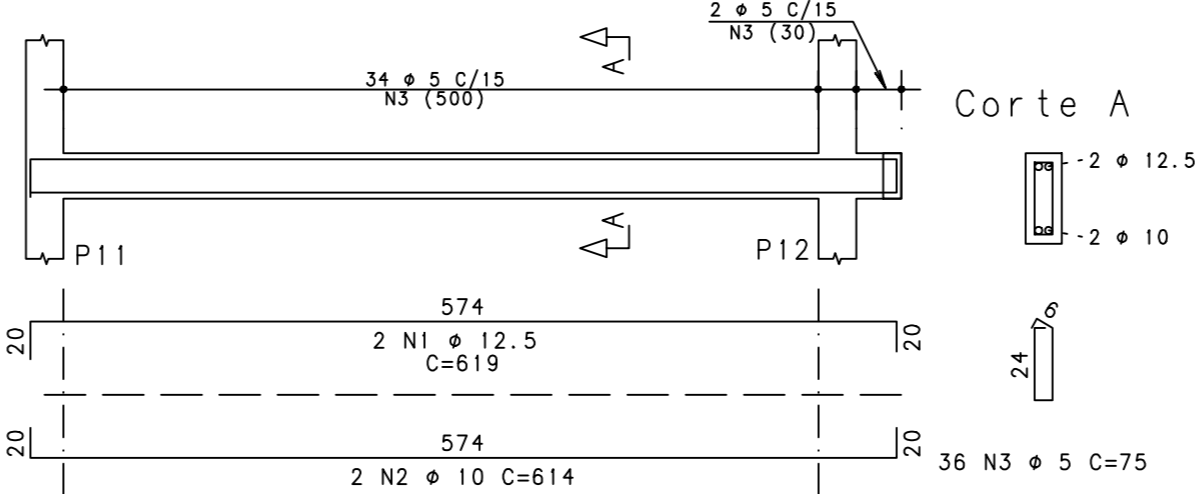
V 5 12/30



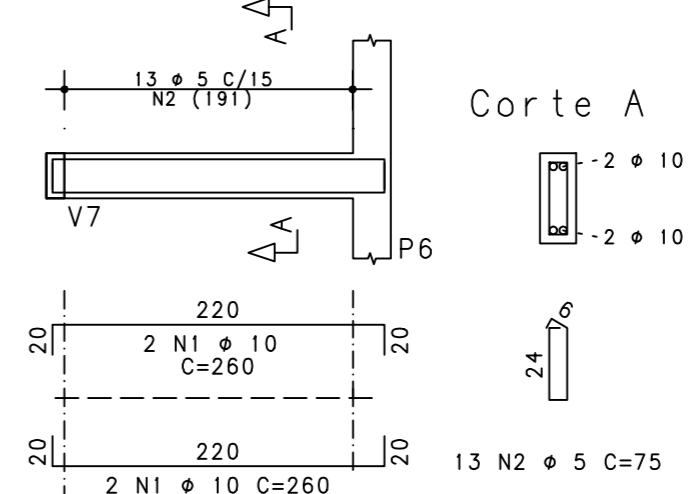
V 6 12/30



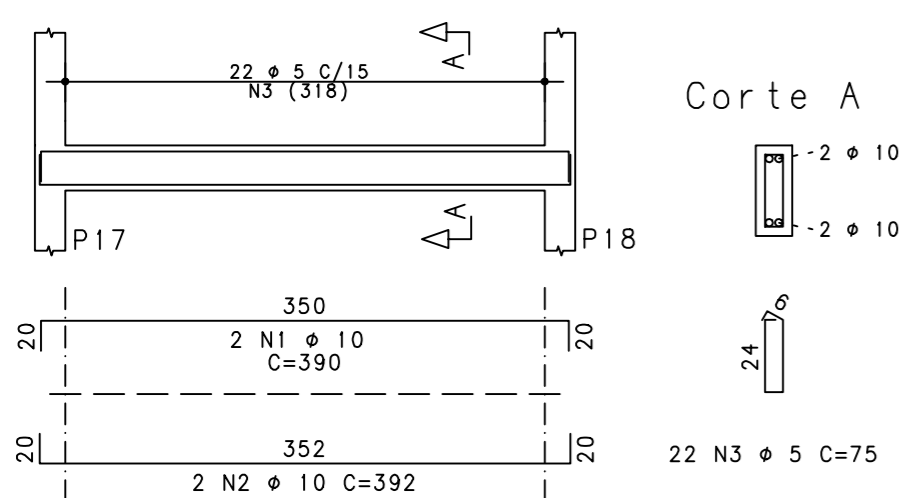
V 7 12/30



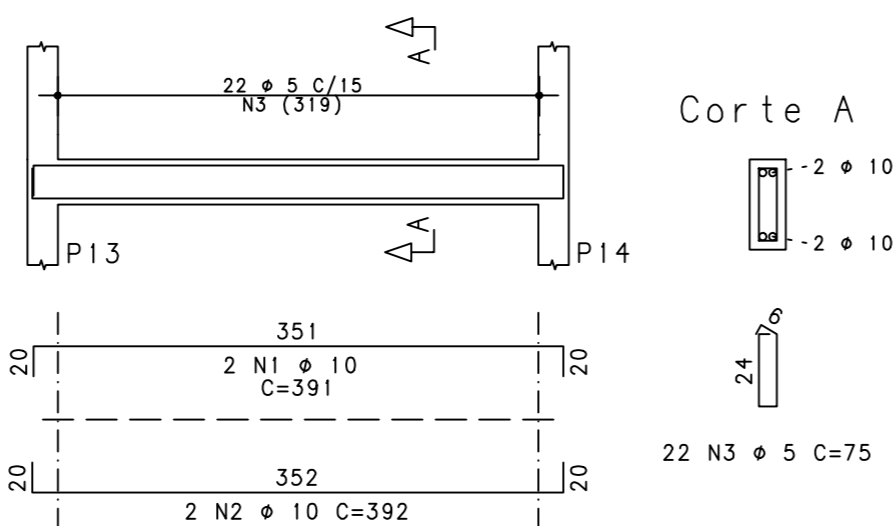
V 8 12/30



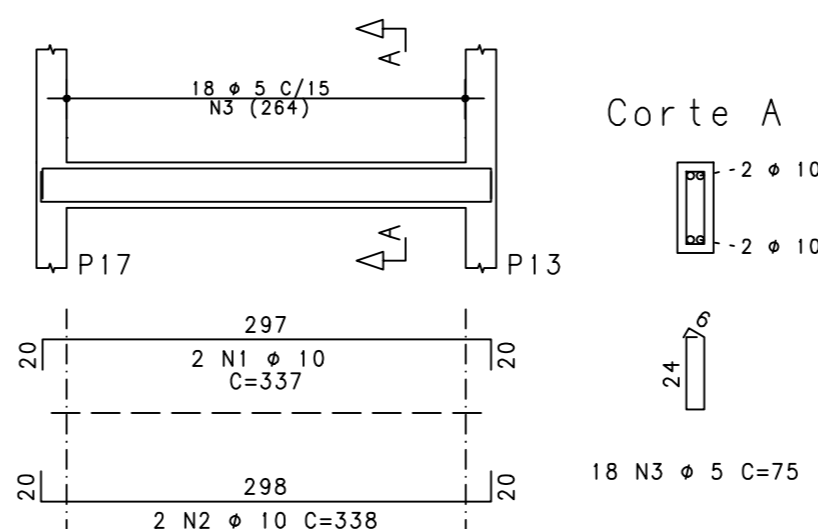
V 9 12/30



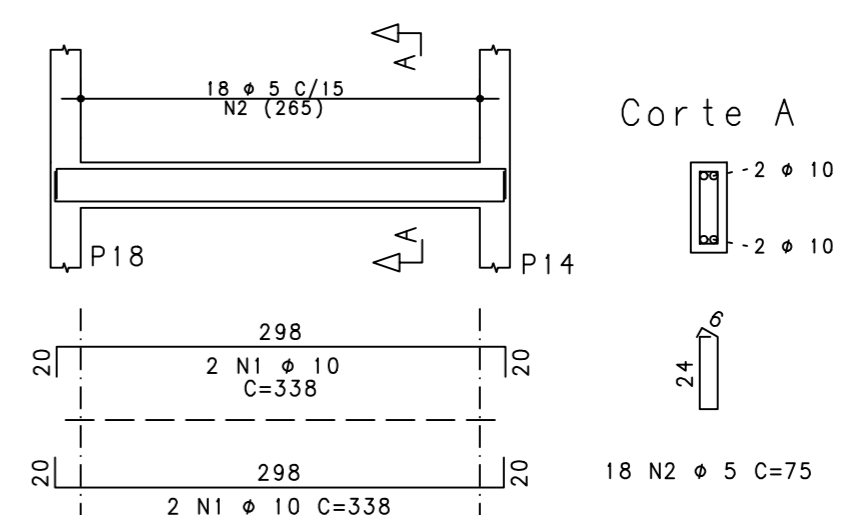
V 10 12/30



V 11 12/30



V 12 12/30



PROPRIETÁRIO: PREF. MUNICIPAL DE NONOAI	RESPONSÁVEL TÉCNICO: ENG. MATEUS BELOTI TROMBETTA
PROJETO: PROJETO REVITALIZAÇÃO DA PRAÇA GETÚLIO VARGAS	
DESCRIÇÃO: PROJETO ESTRUTURAL - CENTRO DE INFORMAÇÕES VIGAS PISO DO NÍVEL 1,15	REVISÃO: RO
LOCAL: CENTRO PRAÇA GETÚLIO VARGAS	DISCRIMINAÇÃO: EMISSÃO INICIAL
	DATA: 03/12/2018
	CIDADE: NONOAI - RS
	ESCALA: IND
	PRANCHA: 000 - 007